



# MONTHLY MEMBERSHIP PROGRESS REPORT

District 24 A

Results as of: 3/31/2015

GMT: JERRY SMITH

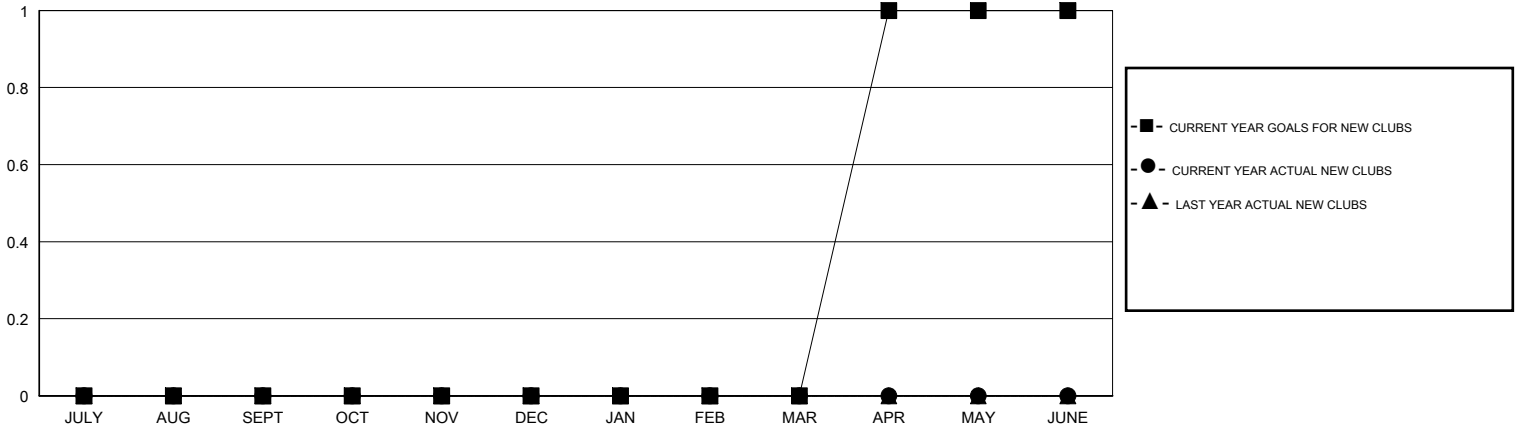
LOCATION VIRGINIA

GMT CA 1

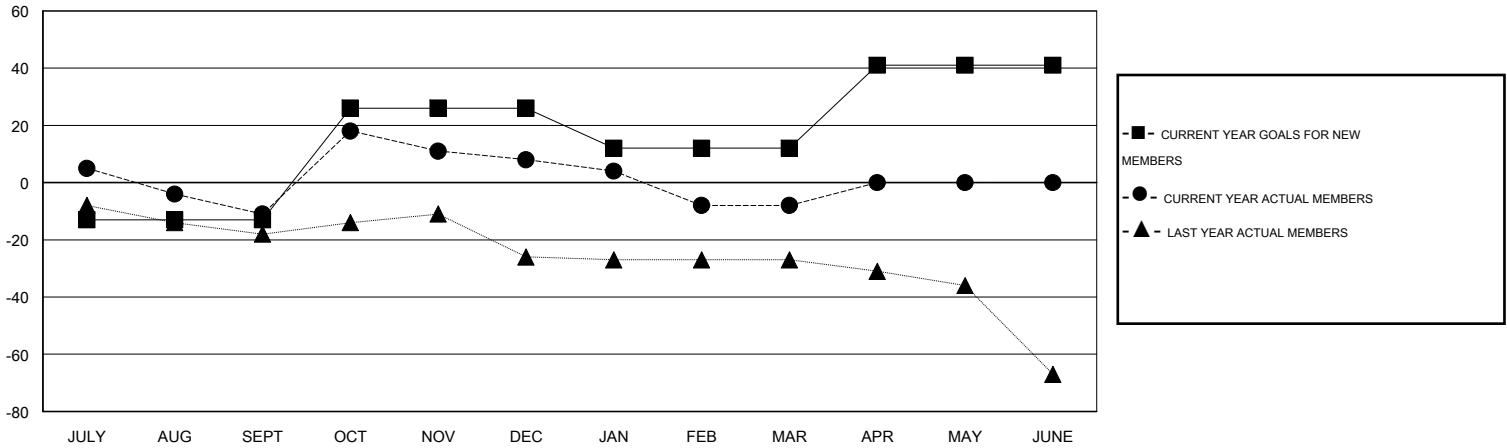
Clubs				
RESULTS FOR 2014-2015				
QUARTER	NEW CLUB GOAL	NEW CLUBS	DROPPED CLUBS	NET GAIN/LOSS
JULY/AUG/SEPT	0	0	0	0
OCT/NOV/DEC	0	0	0	0
JAN/FEB/MAR	0	0	0	0
APR/MAY/JUNE	1	0	0	0

Members				
RESULTS FOR 2014-2015				
QUARTER	NEW MEMBER GOAL	CHARTER AND NEW MEMBERS ADDED	DROPPED MEMBERS	NET GAIN/LOSS
JULY/AUG/SEPT	-13	31	42	-11
OCT/NOV/DEC	39	44	25	19
JAN/FEB/MAR	-14	45	61	-16
APR/MAY/JUNE	29	0	0	0

GOALS AND ACTUAL NEW CLUBS CUMULATIVE



GOALS AND ACTUAL MEMBERS CUMULATIVE



DROPPED CLUBS: 0	36 CLUBS OF 60 ADDED 1 OR MORE NEW MEMBERS	<u>GENDER DISTRIBUTION</u> MALE 1,080 (65.93%) FEMALE 558 (34.07%)
<u>DROPPED MEMBERS</u> DECEASED 31 CLUB CANCELLED 0 OTHER 97 TOTAL 128	<a href="#">CLICK HERE FOR HEALTH ASSESSMENT DATA</a>	FAMILY UNIT MEMBERS 273 HEAD OF HOUSEHOLD 132 NON-HEAD OF HOUSEHOLD 141